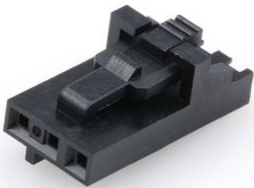




**Part Number :** [50579403](#)  
**Product Description :** SL Crimp Housing, Single Row, Version G, Positive Latch, 3 Circuits, Black  
**Series Number :** 70066  
**Status :** Active  
**Product Category :** Connector Housings  
**Engineering Number :** 70066-0177



## Documents & Resources

### Drawings

[050579403 sd.pdf](#)  
[PK-70066-100-001.pdf](#)

### 3D Models and Design Files


[STEP AP242](#)  
[SOLIDWORKS](#)  
[Creo](#)

### Specifications

[PS-70058-001.pdf](#)  
[PS-70400-001.pdf](#)  
[PS-71851-001.pdf](#)  
[TS-70058-001-001.pdf](#)

## Product Environment Compliance

### Compliance

GADSL/IMDS	Not Relevant
China RoHS	 per SJ/T 11365-2006
EU ELV	Not Relevant
Low-Halogen Status	Not Low-Halogen per IEC 61249-2-21
REACH SVHC	Not Contained per D(2025)4165-DC (25 June 2025)
EU RoHS	Compliant per EU 2015/863

### Compliance Statements

- EU RoHS
- REACH SVHC
- Low-Halogen

### Industry Documents

- IPC 1752A Class C
- IPC 1752A Class D
- Molex Product Compliance Declaration
- IEC-62474
- chemSHERPA (xml)

### Substances of Interest

- PFAS

### EU RoHS Certificate of Compliance

### Additional Product Compliance Information

---

## Part Details

### General

Status	Active
Category	Connector Housings
Series	70066
Description	SL Crimp Housing, Single Row, Version G, Positive Latch, 3 Circuits, Black
Application	Signal, Wire-to-Board
Comments	Version G
Product Name	SL
UPC	800753577756

### Agency

CSA	LR19980
UL	E29179

### Physical

Circuits (maximum)	3
Color - Resin	Black
Flammability	94V-0
Gender	Receptacle

Glow-Wire Capable	No
Keying to Mating Part	Yes
Lock to Mating Part	Yes
Material - Resin	Polyester Alloy
Net Weight	0.338/g
Number of Rows	1
Packaging Type	Bag
Panel Mount	No
Pitch - Mating Interface	2.54mm
Stackable	No
Temperature Range - Operating	-40° to +105°C

### Solder Process Data

Lead-Free Process Capability	N/A
------------------------------	-----

---

## Mates With / Use With

### Mates with Part(s)

Description	Part Number
SL Single Row Housing Panel Mounts	<a href="#"><u>70018</u></a>
SL Single Row Crimp Housings	<a href="#"><u>70107</u></a>
SL Vertical Single Row Headers	<a href="#"><u>70541</u></a>
SL Vertical Single Row Headers	<a href="#"><u>70543</u></a>
SL Vertical Single Row Headers	<a href="#"><u>70545</u></a>
SL Vertical, Single Row, Surface Mount Headers	<a href="#"><u>74099</u></a>
SL Right-Angle Single Row Headers	<a href="#"><u>70551</u></a>
SL Right-Angle, Single Row, Low Profile Headers	<a href="#"><u>70553</u></a>
SL Right-Angle Single Row Headers	<a href="#"><u>70555</u></a>
SL Right-Angle, Single Row, Low Profile, Surface Mount Headers	<a href="#"><u>70634</u></a>

### Use with Part(s)

Description	Part Number
SL Female Terminals	<u>70058</u>
SL Female Terminals	<u>71851</u>